



Annual REPORT

FY 2008
Ending in June 2008

ABOUT US

OUR VISION

The Vision of Children's Advocacy Services of Greater St. Louis is that communities will respond to families impacted by childhood trauma in a prompt, coordinated manner that ensures physical and psychological safety, promotes justice and supports recovery.

OUR MISSION

The Mission of Children's Advocacy Services of Greater St. Louis is to reduce the effects of trauma experienced by children and adolescents through: trauma informed assessment and counseling, child-sensitive forensic interviews, consistent victim advocacy, utilization based research, quality undergraduate and graduate training, responsive community outreach, and relevant advocacy to influence public policy.

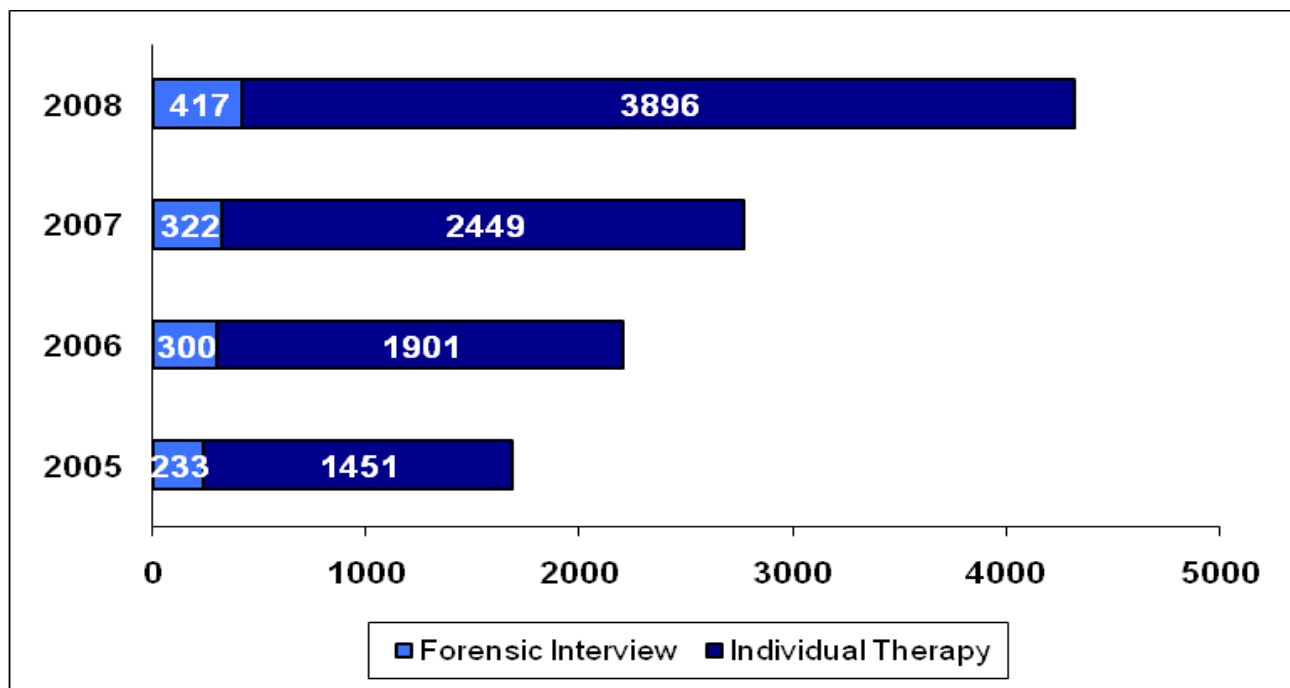
OUR YEAR END REVIEW

- CASGSL clinicians provided trauma informed counseling to 445 children and their families through more than 3,900 sessions of individual and group counseling in FY 08
- CASGSL forensic staff interviewed 417 children who were alleged victims of child abuse and neglect in FY 08
- CASGSL trained over 21 undergraduate and graduate students in forensic and clinical practicum experiences and provided continuing education to over 1,000 community based professionals
- We learned that over 489 charges were filed against suspects as a result of our FY 07 forensic interviews
- We learned from a follow up study that previous CASGSL counseling clients maintained their progress (e.g. reduced trauma symptoms) for up to two years after completing counseling
- We learned that, on average, each child has experienced 3.4 traumas *before* seeking services at CASGSL and that most of these families make less than \$20,000 per year.
- We learned that over 75% of the children we see in our forensic and counseling units are aged 12 or under



PROFESSIONAL SERVICES OVERVIEW

For the third year in a row, CASGSL has significantly increased its overall capacity of individual client service units; FY08 saw a 35% increase overall from FY07. The graph below illustrates recent growth in forensic interviews and sessions of individual and family counseling. Group therapy sessions are not included in this graph.



FORENSIC SERVICES

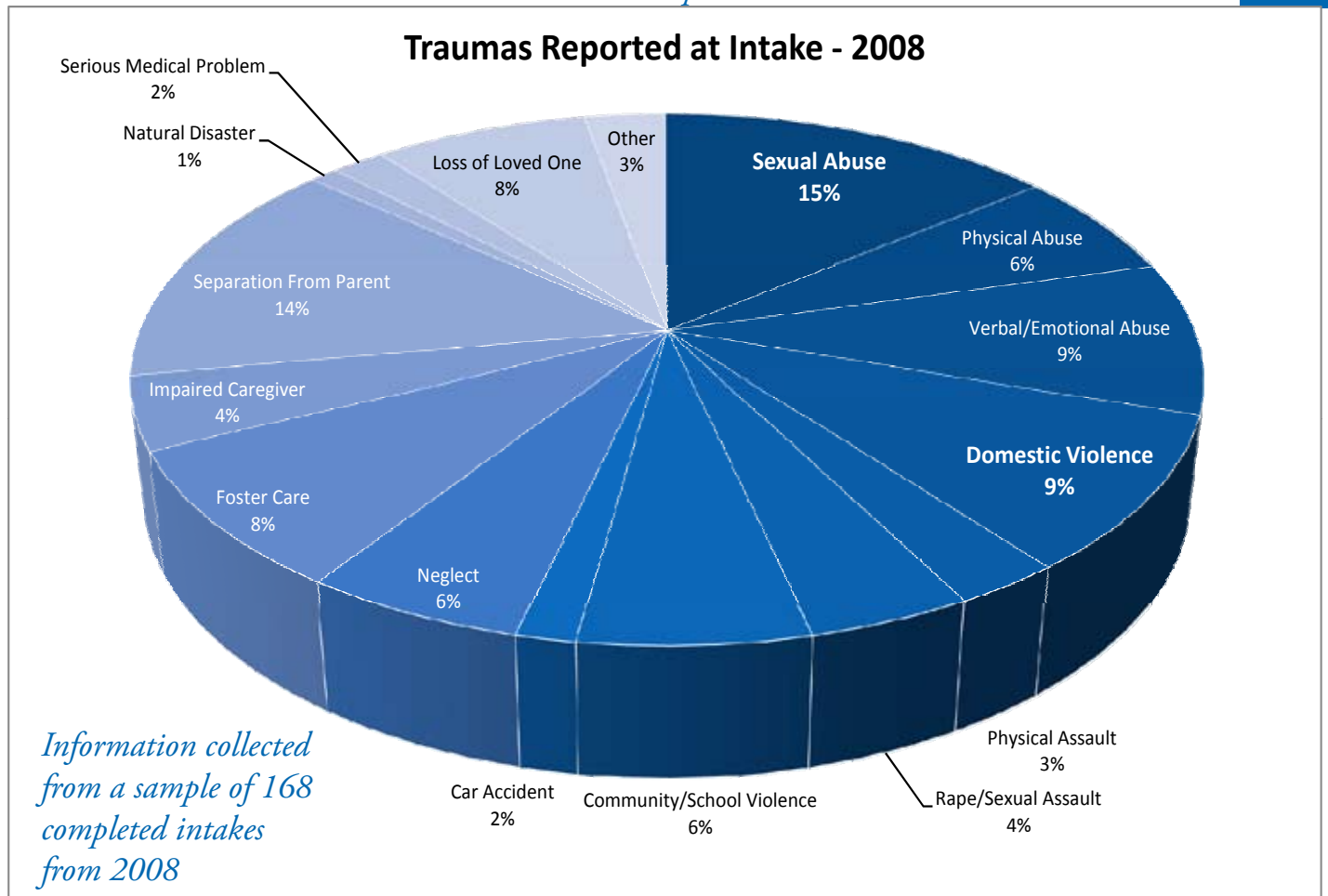
During FY 2007-2008, CASGSL staff completed 417 forensic interviews to assist local law enforcement and child protection services investigations of child abuse and neglect. The bulk of the investigations from FY 08 continue to work their way through the system but data from 2006-2007 indicates that approximately 58% of the adult cases we interview result in formal charges being filed. In 2006-2007, investigations assisted by CASGSL forensic interviews resulted in 489 charges being filed against suspects.

“ [I] just want to say thank you for everything you all have done and continue to do for me

- Forensic client ”

WHO DO WE SERVE?

The average number of traumas experienced per child prior to intake is **3.46**



COUNSELING SERVICES

CASGSL clinicians offer the most comprehensive array of trauma informed evidence based practices to victims of child maltreatment in the St. Louis metropolitan area. During FY08, 385 children and adolescents received individual and/or family counseling services at CASGSL. A total of 3896 counseling sessions were provided which represents a 59% increase in capacity from the year before. CASGSL has maintained its clinical presence in St. Louis City by continuing to offer services at the West Pine location. Both locations offered hours in the evenings and Saturdays.

In addition to the families served through individual counseling sessions, over 60 children and their caregivers received group counseling services through CASGSL's three group treatment programs which address various trauma related issues.

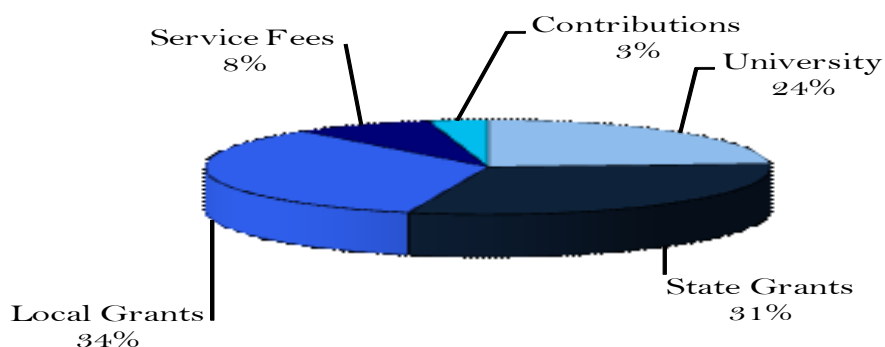
Typically, CASGSL clients remain in treatment for approximately 6-9 months and show improvement across several domains at treatment conclusion. CASGSL recently completed a study that assessed CASGSL clients at six month intervals for up to two years post treatment. Preliminary data suggest that CASGSL clients maintained their treatment gains following counseling especially in the areas related to Post Traumatic Stress symptoms (e.g. intrusive thoughts, avoidance of trauma related stimuli, hyperarousal).



FINANCIAL OVERVIEW

Total revenues for CASGSL in FY08 were \$1,182,317

REVENUE



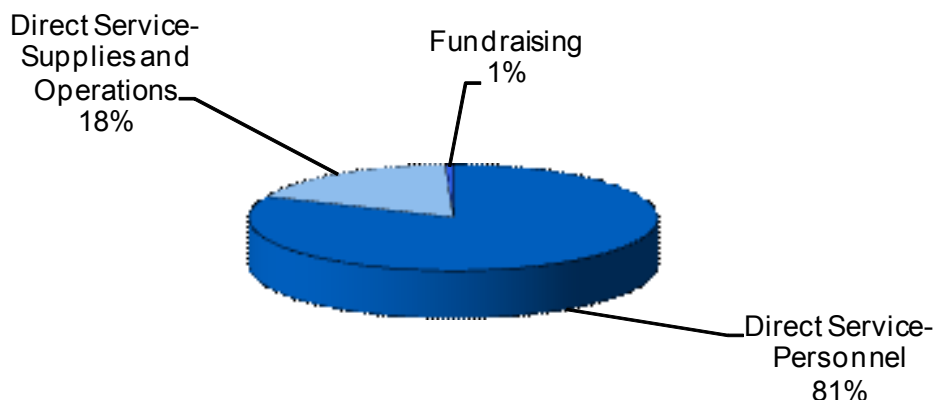
Total revenues for CASGSL in FY08 were \$1,182,317. Total expenses were \$1,070,567. Significant funding sources include \$775,117 in external funding secured through successful grant applications, \$280,910.00 in Rate funding through the University, \$53,176 in individual, foundation and corporate donations (which includes approximately \$15,000.00 in proceeds from the Keep Kids Safe Walk) and \$95,952 in fees collected from clients and insurance claims.

EXTERNAL FUNDING OVERVIEW

St. Louis Mental Health Board	\$186,014	Trauma informed counseling for caregivers and children in St. Louis City
St. Louis Mental Health Board	\$199,852	Counseling for complex trauma victims with serious emotional disturbance for St. Louis City residents
Missouri Dept of Social Service	\$240,004	Forensic interviewing services
Missouri Dept of Public Safety	\$ 52,639	Group therapy for child victims of crime
Missouri Dept of Public Safety	\$ 49,244	Victim advocacy services
Missouri Dept Health/Sr Service	\$ 3,850	Sexual assault victims services
Missouri Dept Health/Sr Service	\$ 21,014	Sexual assault prevention services
National Children's Alliance	\$ 10,000	Forensic program support
Norman J. Stupp Foundation	\$ 7,500	Follow-up research project
Boeing Community Fund	\$ 5,000	Counseling scholarships

Total expenses were \$1,070,567.

EXPENSES



Total expenses for CASGSL in FY08 were \$1,070,567. Salaries and benefits in the amount of \$872,117 represent the bulk (81%) of CASGSL expenses. CASGSL supports the salaries and benefits of seventeen full time positions and eight part time and student employees.

Operating expenses of 18% include building maintenance, utility and computing expenses, supplies for programming and general office supplies, as well as Staff Development and travel expenses. Less than 2% of the CASGSL budget was used for fundraising efforts during FY 08.

BUDGET - FY 2008-2009

In 2008-2009, CASGSL will continue to build capacity, seek higher reimbursement rates for clinical services from insurance panels, actively seek donations from individuals and foundations and implement systematic billing and collection procedures to increase revenues. Anticipated additional expenses include covering the salary and benefits of the Mental Health Coordinator for the forensic unit and additional therapists to handle the caseload generated by capacity building efforts. Anticipated operational expenses include costs associated with flooring replacement at both buildings (approximately \$80,000 to

\$100,000), completing the installation of additional video equipment in therapy rooms (approximately \$10,000) and replacing outdated computers at both sites (approximately \$12,000). Anticipated staff development costs include travel and lodging costs associated with staff members participation in two Learning Collaboratives sponsored by the National Child Traumatic Stress Network, as well as appropriate conferences related to child maltreatment investigations and treatment (approximately \$20,000).

TRAINING AND INSTRUCTION OVERVIEW

CASGSL offers a number of graduate and undergraduate training experiences for students wishing to learn about child maltreatment and trauma. In FY 2008, CASGSL funds supported one Graduate Research Assistantship, three Clinical Clerkship placements for advanced doctoral students in the Clinical Psychology program and a pre-doctoral intern. These positions allowed these capable graduate students to supervise research operations, co-facilitate groups and learn a variety of evidence based trauma informed treatment modalities. In addition to paid positions, CASGSL staff supervised seventeen unpaid practicum experiences for undergraduate and graduate students including clinical and forensic

internships, experiences for intake clinicians, group facilitators and research assistants.

In addition to formal training opportunities for students, CASGSL staff provided community based training for over 1,000 professionals through our Community Education programming that presents trauma related topics through CASGSL's monthly Child Trauma Colloquium series and workplace seminars arranged upon request.



Trauma-Focused Interventions for Youth in Residential Care: An Implementation Demonstration Pilot

This study is an implementation demonstration pilot, designed to uncover approaches to the implementation of trauma-focused, evidence-based practices (EBPs) (i.e., Structured Psychotherapy for Adolescents Responding to Chronic Stress, Trauma-Focused Cognitive-Behavioral Therapy) in a residential setting. Results from this project are designed to inform mental health quality improvement efforts underway with Missouri, and to provide the basis for future federally-supported studies that can test ways to successfully implement other EBPs in a variety of settings in Missouri.

The study is being conducted by a team from Evangelical Children's Home (a residential treatment facility in St. Louis; Washington University in St. Louis;

and the Children's Advocacy Services of Greater St. Louis affiliated with the University of Missouri-St. Louis. State partners to the study include the Missouri Division of Medical Services, and the Missouri Department of Mental Health.



SCHOLARSHIP OVERVIEW

CASGSL supports scholarly efforts of faculty, staff and students. Below are listed papers, posters, and presentations accepted in FY 2007-2008.

Dunn, J., Kliethermes, M., Wilcox, N. Child Welfare Committee, National Child Traumatic Stress Network & National Children's Alliance. (2008). *CAC Directors' Guide to Mental Health Services for Abused Children*. Los Angeles, CA & Durham, NC: National Center for Child Traumatic Stress.

Dunn, J. *Helping Families with Young Children Respond to Trauma*. Presentation at National Parents as Teachers Conference. Sponsored by Parents as Teachers National Center. St. Louis, MO. March, 2008.

Dunn, J. *The Impact of Complex Trauma for Children Involved in the Juvenile Justice System*. Presentation at the State Bridging Our Worlds Conference. Sponsored by the Missouri Juvenile Justice Association. Lake of the Ozarks, MO. October, 2007.

Dunn, J. *Compassion Fatigue- Incidence, Assessment and Implications for Multidisciplinary Teams*. Presentation at the Regional Protecting Our Children Conference. Sponsored by the U.S. Attorneys Office Midwest Region. St. Louis, MO. September, 2007.

Dunn, J. *Evidence Based Practices in Child Maltreatment*. Presentation at the Regional Protecting Our Children Conference. Sponsored by the U.S. Attorneys Office Midwest Region, September, 2007. St. Louis, MO.

Dunn, J. *First, Do No More Harm- How Evidence Based Practices Reduce Child Trauma*. Presentation at the State Be Aware Now Conference. Sponsored by Missouri Children's Trust Fund. March, 2007 Jefferson City, MO.

Finnegan, T., Thompson, G., Surrat, E., Kutz, T., Kliethermes, M., & Winton, D. (November, 2007). Panel presentation for the "Remedies for Families and Children in a Socially "Toxic" World" Conference. St. Louis, MO.

Kliethermes, M. (June/July, 2008). *Assessment and Treatment of Trauma in Children and Adolescents*. Two invited presentations for Jewish Family and Children Services. St. Louis, MO.

Kliethermes, M. (April, 2008). *Trauma in Children and Adolescents; Trauma-Focused Cognitive-Behavioral Therapy*. Invited presentations for the 4th Annual Prevention & Interventions for Ending Violence Against Women, Children and Families Conference. St. Charles, MO.

Kliethermes, M. (March, 2008). *Trauma and Children with Developmental Disabilities*. Invited presentation for the St. Louis Office for Developmental Disability Resources. St. Louis, MO.

Kliethermes, M. (January, 2008). *Accurate Diagnosis of Trauma Spectrum Disorders in Children and Adolescents*. Invited presentation for the St. Louis Predoctoral Psychology Internship Consortium. St. Louis, MO.

Kliethermes, M. (January, 2008). *Accurate Diagnosis of Trauma Spectrum Disorders in Children and Adolescents*. Invited presentation for the Children's Advocacy Services of Greater St. Louis Child Trauma Colloquium. St. Louis, MO.

Kliethermes, M. (December, 2007). *Trauma 102: Advanced Concepts in Child and Adolescent Trauma*. Invited presentation for Good Shepherd Children and Family Services. St. Louis, MO.

Kliethermes, M. & Gevers, A. (September, 2007). *Complex Trauma in Children and Adolescents*. Invited presentation for the 4th Annual Protect Our Children Conference, St. Louis, MO.

Kliethermes, M. (August, 2007). *Trauma in Children and Adolescents*. Invited workshop for the St. Louis Area Council on Child Abuse and Neglect. St. Louis, MO.

Perkins, J., Pettibone, A., & Chirco, M. *Maternal Support and Severity of Trauma Symptomatology in Sexually Abused Children: The Moderating Role of Active Coping*. Undergraduate Research Symposium. University of Missouri – St. Louis. April 2008.

Perkins, J. *Externalizing Behavior Problems in Female Children with Sexual Behavior Problems*. Undergraduate Research Symposium. University of Missouri – St. Louis. April 2007.

DONORS

Thank you to all of our donors for their heartfelt contributions which help to provide CASGSL with the means to help heal and protect the children of our community. Your generosity is greatly appreciated by everyone at the center.

Gifts over \$1,000

Bill Anderson
Martha and Steven Harting
Pete and Elizabeth M. Hogan
John R. Goodall Trust
MasterCard
Worldwide
Susan H. Rothschild
Saint Louis Unitarian Foundation
Sam's Club
Soroptimist International
St. Lucas United Church of Christ
Richard & Laurie G. Waligurski

Gifts from \$100 to \$999

American Water
Anonymous
The Bisys Group, Inc.
California Pizza Kitchen
Wesley Card
City of Saint Louis
Common Ground PR
Crump Group, Inc.
Deaconess Hospital Auxiliary
Diane C. Distl
Doris A. Drewry
Effective Editing, Inc.
Frederick B. Ewing III
Thomas & Diane Eyssell
James P. Gamble LLC
The Harris Foundation, Inc.
Cindy S. Johnson
Martin A. Klug
Robert N. Kollar
Becky Powers
Caroline M. Sant
Joan E. Schacht
Joseph F. Schweppe
Vision For Children At Risk Inc.

Gifts from \$50 to \$99

Dinorah L. Aguilar
Edgar Aguilar
Anheuser-Busch Foundation
Sandra K. Baker
Kathleen DeBolin
Ruth F. Diamond
Diane C. Distl
Jerry, Kevin & Matthew Dunn
Rebecca C. Gordon
Kathy Hartmann
Paula M. Juelich
Matt & Julie Kliethermes
Gene Kopf
Jodie A. Kopp
Joseph and Sandra K. Laramie
Donald L. Lewis
John J. Lorentz
Jane Martin
Danielle Morgenthaler
Joann C. Moritz
Patricia G. Owens
Michael P. Rejniak
SAFECO Insurance Company
Robert C. Sczepanski
William F. Siedhoff
Cathy J. Stockman
Judith A. Street
Charles E. Valier
Catherine L. Waligurski
Kathleen A. Wiethop
Carol G. Wolken

Gifts up to \$50

Latricia M. Allen
Angela M. Balch
Sara L. Barwinski
Sean C. Beste
Laura S. Blumenfeld
Nancy Bochnber
Daniel J. Bock
Connilee J. Boehne
Jennifer Bosshardt
Jamilah Boyd
Laura Brannon

Kim Breidenbach
Jill A. Bright
Justin N. Browne
Nicole Burkemper
Robert Cain
David Calcaterra
Bruce E. Carrell
Carriage House
Bret Cassity
Judy Cates
Dolores K. Cates
Juanita Chapman
Carol A. Chickey
Mike Claspille
Troy Clausen
C. Baker Cunningham
Dorothy R. Denny
C. M. Dermott
Candace Dillon
Jeff Distl
Will Distl
Jennifer L. Dudek
Greg Dufner
Kathy Easley
Janet Eichorn
Thomas M. Eschen
Megan Eyssell
Francesca Ferrari
Amy J. Fite
Catherine J. Freesmeier
Marcella J. Friedle
Lori M. Fuller
Donna C. Garrett
Rhonda R. Garrett
Joan M. Garrison
John Gavin
Erin Granger
Sally Greene
Laura Gundy
John Harper
Reggie Harris
Robert N. Harris
Denise Hervey
Kai Hervey
Michael Herzberg
Daniel Isom, II
Karen Janiak
Robert E. Jauer, Jr.
Fran Johnson
Kenneth J. Johnston
Theresa Johnston
Mike Karban
Melanie Kellermann
Emily J. Kerr

Anne Kilburn
Steve Kilburn
Lucy R. Klostermann
Donna Koenigsfeld
Jamie H. Koshgerian
Christine H. Krug
Jane Landis
Breanna Lane
Lorie Lane
Sean M. Leighton
Michael C. Lorentz
Magnificat Center, Inc.
Russell A. McAtee
Kathryn McClellan
Michael McQuillen
Jeff Miller
Rebekah Miller
Tracy Miller
Veronica D. Milligan
Sandra Montgomery
Shelly Morgan
Neumayer Equipment
Mickey A. Owens
Drew Patterson
Sarah Patterson
Deborah M. Perron
The Pfizer Foundation
Andrew Potthast
James Przada
Gerard Rawle
Marva J. Robinson
Steward
Zarah Robinson
Cynthia A. Rodriguez
Julia Rudden
Christopher Scarberry
Megan M. Schacht
Amanda L. Schnabel
Karen R. Sczepanski
Robert C. Sczepanski
William F. Siedhoff
Michael Sinkfield
Daniel Slay
Jonathon F. Spencer
William B. Springer
Jennifer Ford Stamps
Christopher L. Sullivan
Jennifer Szczucinski
Amy Tadrick
Mary W. Thomasson
Gary L. Thompson

Tena J. Thompson
Stefanie A. Toler
Jennifer O. Tompras
Candice Towell
Sandra Turek
Wendy Vanronzelen
Christy Vinson
Becca Waligurski
Curtis Waligurski
Diana L. Waligurski
Grace Waligurski
Raymond J. Waligurski
Katrina Weber
Dave Werner
Carolyn Wiener
Amy Wobbe
Various Other Persons

Gifts of Goods & Services

Borders, Inc.
California Pizza Kitchen
Dierbergs Markets, Inc.
Gold's Gym
Ms. Rhonda Murphy
Old Navy
Panera Bread
Pepsi America
Purina Mills, Inc.
Ms. Lori Rasmussen
Save-A-Lot Food Stores, Inc.
Shop N' Save
Six Flags
Wal-Mart Stores, Inc.